

Cell Culture Consumables



PakGent cell culture consumables are designed for culture consistency, cell health, and reproducibility. Select the surface and ancillary options you're looking for in a tissue culture consumables from our comprehensive portfolio. Choose from a variety of surfaces and sizes to suit your specific applications and cell types.

Choose the best consumables for your experiment

Non-treated surface for suspension culture

High-quality, optically clear virgin polystyrene with a hydrophobic surface is exceptional for suspension culture.

Ultra-low binding series for suspension cells

Coating a special amphiphilic polymer onto the surface of the culture vessel, due to the particularly strong hydrophilicity of this compound, amphiphilic molecules can absorb water molecules to form a water wall, so that cells, protein molecules and bacteria cannot be attached to the culture vessel, so it has the characteristics of ultra-low cell adhesion.

TC Enhanced treated Series for cell culture with high adherence requirements

Advanced tissue culture treatment, compared with standard TC-treated products, TC-enhanced surface has the ability to promote cell adhesion and extension, rapidly expand cell populations, and can be used to propagate demanding cells such as primary cells or sensitive cells, as well as cells cultured under restricted growth conditions (serum-free or serum-reduced), increase the rapidly expanding cell population, promote cell attachment and extension.

TC-treated surface for adherent cells

A standard tissue culture (TC) surface modification that makes the polystyrene surface more hydrophilic, thus facilitating maximum adhesion for a broad range of cell types.

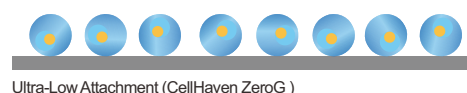
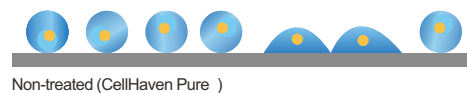
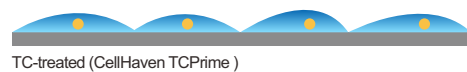
Poly-D-lysine coated surface treatment

Poly-D-lysine (PDL) is a synthetic compound that can promote cell adhesion and protein adsorption by changing the surface charge of the culture substrate. In addition to promoting cell adhesion, poly-D-lysine-treated surfaces support neurite outgrowth and improve the survival of many central nervous system (CNS) primary cell cultures. Since PDL is a synthetic molecule, it will not stimulate the biological activity of cultured cells, nor will it introduce impurities carried by natural polymers.

UV-Transparent Microplates


UV plate allows 80%, 260nm/280nm wavelength UV light to pass through its flat-bottomed interface, using this feature to quantify the content and purity of deoxyribonucleic acid (DNA) and protein (Protein).


Select surface

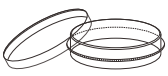


		CellHaven ZeroG	CellHaven Pure	CellHaven TCPPrime	CellHaven TCUltra
Hepatocytes				●	●
Endothelial cells				●	●
Neural cells	Neuronal cells				●
	Neurosphere	●			
Epithelial cells				●	●
Tumor cells		●		●	●
Blood cells	Macrophages, Dendritic cells, Neutrophils	●			
	Lymphocytes	●	●		
	Platelets				
Stem cells	MSC			●	●
	ESC				●
	EB	●			

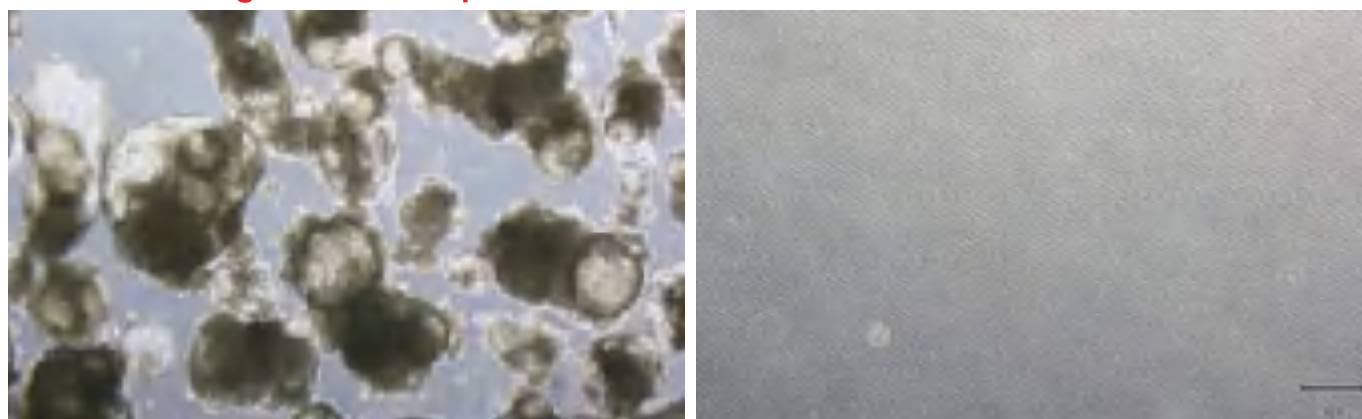
Non-treated surface for suspension culture

	Part No.	Growth area (cm ²)	Volume (ml)	Recommended working vol. (ml)	Max. working vol. (ml)	Cap	Sterility level	Pack
 <p>Cell culture flask</p>	CL-F025P	25	50	5~7.5	19	Plug Cap	SAL=10 ⁶	10 pcs/bag, 20 bags/case
	CL-F025V	25	50	5~7.5	19	Vent Cap	SAL=10 ⁶	10 pcs/bag, 20 bags/case
	CL-F075P	75	250	15~22.5	55	Plug Cap	SAL=10 ⁶	5 pcs/bag, 20 bags/case
	CL-F075V	75	250	15~22.5	55	Vent Cap	SAL=10 ⁶	5 pcs/bag, 20 bags/case
	CL-F175P	175	600	35~52.5	150	Plug Cap	SAL=10 ⁶	5 pcs/bag, 6 bags/case
	CL-F175V	175	600	35~52.5	150	Vent Cap	SAL=10 ⁶	5 pcs/bag, 6 bags/case
	CL-F225P	225	900	60~90	310	Plug Cap	SAL=10 ⁶	5 pcs/bag, 5 bags/case
	CL-F225V	225	900	60~90	310	Vent Cap	SAL=10 ⁶	5 pcs/bag, 5 bags/case


	Part No.	Well	Well type	Culture area of a single well (cm ²)	Recommended working volume of a single well (ml)	Sterility level	Pack
 <p>Cell culture plate</p>	CL-P006	6	Flat	10.15	1.9~2.9	SAL=10 ⁶	Individual pack, 100 pcs/case
	CL-P012	12	Flat	3.51	0.69~1.1	SAL=10 ⁶	Individual pack, 100 pcs/case
	CL-P024	24	Flat	1.92	0.37~0.56	SAL=10 ⁶	Individual pack, 100 pcs/case
	CL-P048	48	Flat	1.11	0.25~0.38	SAL=10 ⁶	Individual pack, 100 pcs/case
	CL-P096	96	Flat	0.31	0.077~0.21	SAL=10 ⁶	Individual pack, 100 pcs/case
	CL-P096U	96	U	0.31	0.077~0.21	SAL=10 ⁶	Individual pack, 100 pcs/case


	Part No.	Culture area (cm ²)	Recommended working volume (ml)	Dimension (mm)	Sterility level	Pack
 <p>Cell culture dish</p>	CL-D035	8.9	2.1~3.7	35*10	SAL=10 ⁶	20 pcs/bag, 25 bags/case
	CL-D060	21.3	4.0~7.0	60*15	SAL=10 ⁶	10 pcs/bag, 50 bags/case
	CL-D100	57.2	11.3~18.8	100*20	SAL=10 ⁶	10 pcs/bag, 30 bags/case
	CL-D150	143.7	25.1~50.3	150*20	SAL=10 ⁶	5 pcs/bag, 20 bags/case


Ultra-low binding series for suspension cells



Fetal sphere cells were cultured in EB for 15 days and the cell morphology was good. After washing with PBS buffer, no cells adhered to the culture dish.

	Part No.	Description	Sterility level	Pack
 <p>Cell culture flask</p>	CL-FL025P	25 cm ² cell culture flask with plug cap, Ultra-low binding	SAL=10 ⁶	10 pcs/bag, 5 bags/case
	CL-FL025V	25 cm ² cell culture flask with vent cap, Ultra-low binding	SAL=10 ⁶	10 pcs/bag, 5 pcs/case
	CL-FL075P	75 cm ² cell culture flask with plug seal cap, Ultra-low binding	SAL=10 ⁶	5 pcs/bag, 5 pcs/case
	CL-FL075V	75 cm ² cell culture flask with vent cap, Ultra-low binding	SAL=10 ⁶	5 pcs/bag, 5 pcs/case
	CL-FL175P	175 cm ² cell culture flask with plug seal cap, Ultra-low binding	SAL=10 ⁶	1 pcs/bag, 20 pcs/case
	CL-FL175V	175 cm ² cell culture flask with vent cap, Ultra-low binding	SAL=10 ⁶	1 pcs/bag, 20 pcs/case

	Part No.	Description	Sterility level	Pack
 <p>Cell culture plate</p>	CL-PL006	6 well cell culture plate, flat bottom, Ultra-low binding	SAL=10 ⁶	Individual pack, 40 pcs/case
	CL-PL012	12 well cell culture plate, flat bottom, Ultra-low binding	SAL=10 ⁶	Individual pack, 40 pcs/case
	CL-PL024	24 well cell culture plate, flat bottom, Ultra-low binding	SAL=10 ⁶	Individual pack, 40 pcs/case
	CL-PL048	48 well cell culture plate, flat bottom, Ultra-low binding	SAL=10 ⁶	Individual pack, 40 pcs/case
	CL-PL096	96 well cell culture plate, flat bottom, Ultra-low binding	SAL=10 ⁶	Individual pack, 48 pcs/case
	CL-PL096U	96 well cell culture plate, U bottom, Ultra-low binding	SAL=10 ⁶	Individual pack, 48 pcs/case

	Part No.	Description	Sterility level	Pack
 <p>Cell culture dish</p>	CL-DL035	35mm cell culture dish, Ultra-low binding	SAL=10 ⁶	10 pcs/bag, 4 bags/case
	CL-DL060	60mm cell culture dish, Ultra-low binding	SAL=10 ⁶	10 pcs/bag, 4 bags/case
	CL-DL100	100mm cell culture dish, Ultra-low binding	SAL=10 ⁶	10 pcs/bag, 4 bags/case
	CL-DL150	150mm cell culture dish, Ultra-low binding	SAL=10 ⁶	5 pcs/bag, 12 bags/case


TC-treated surface for adherent cells





RAW264.7 cells culture on PakGent 6 well TC-treated Cell Culture Dish.



Hepatocyte culture on PakGent 100mm TC-treated Cell Culture Dish.

	Part No.	Growth area (cm ²)	Volume (ml)	Recommended working vol. (ml)	Max. working vol. (ml)	Cap	Sterility level	Pack
 <p>Cell culture flask</p>	CL-FT025P	25	50	5~7.5	19	Plug Cap	SAL=10 ⁶	10 pcs/bag, 20 bags/case
	CL-FT025V	25	50	5~7.5	19	Vent Cap	SAL=10 ⁶	10 pcs/bag, 20 bags/case
	CL-FT075P	75	250	15~22.5	55	Plug Cap	SAL=10 ⁶	5 pcs/bag, 20 bags/case
	CL-FT075V	75	250	15~22.5	55	Vent Cap	SAL=10 ⁶	5 pcs/bag, 20 bags/case
	CL-FT175P	175	600	35~52.5	150	Plug Cap	SAL=10 ⁶	5 pcs/bag, 6 bags/case
	CL-FT175V	175	600	35~52.5	150	Vent Cap	SAL=10 ⁶	5 pcs/bag, 6 bags/case
	CL-FT225P	225	900	60~90	310	Plug Cap	SAL=10 ⁶	5 pcs/bag, 5 bags/case
	CL-FT225V	225	900	60~90	310	Vent Cap	SAL=10 ⁶	5 pcs/bag, 5 bags/case

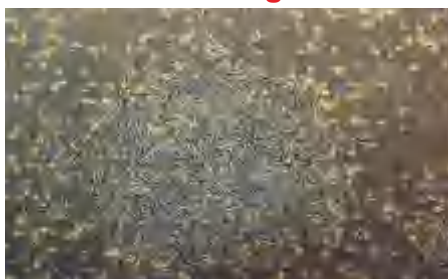
	Part No.	Well	Well type	Culture area of a single well (cm ²)	Recommended working volume of a single well (ml)	Sterility level	Pack
 <p>Cell culture plate</p>	CL-PT006	6	Flat	10.15	1.9~2.9	SAL=10 ⁶	Individual pack, 100 pcs/case
	CL-PT012	12	Flat	3.51	0.69~1.1	SAL=10 ⁶	Individual pack, 100 pcs/case
	CL-PT024	24	Flat	1.92	0.37~0.56	SAL=10 ⁶	Individual pack, 100 pcs/case
	CL-PT048	48	Flat	1.11	0.25~0.38	SAL=10 ⁶	Individual pack, 100 pcs/case
	CL-PT096	96	Flat	0.31	0.077~0.21	SAL=10 ⁶	Individual pack, 100 pcs/case

	Part No.	Culture area (cm ²)	Recommended working volume (ml)	Dimension (mm)	Sterility level	Pack
 <p>Cell culture dish</p>	CL-DT035	8.9	2.1~3.7	35*10	SAL=10 ⁶	20 pcs/bag, 25 bags/case
	CL-DT060	21.3	4.0~7.0	60*15	SAL=10 ⁶	10 pcs/bag, 50 bags/case
	CL-DT100	57.2	11.3~18.8	100*20	SAL=10 ⁶	10 pcs/bag, 30 bags/case
	CL-DT150	143.7	25.1~50.3	150*20	SAL=10 ⁶	5 pcs/bag, 20 bags/case

TC Enhanced treated Series for cell culture with high adherence requirements




4X Culture of Lung Epithelial Progenitor Colonies





Embryonic Stem Cell Culture (HESC)




Nerve cell culture (Nerve/PC12)


	Part No.	Description	Sterility level	Pack
 <p>Cell culture flask</p>	CL-FET025P	25 cm ² cell culture flask with plug seal cap, TC Enhanced	SAL=10 ⁶	10 pcs/bag, 5 bags/box, 4 boxes/case
	CL-FET025V	25 cm ² cell culture flask with vent cap, TC Enhanced	SAL=10 ⁶	10 pcs/bag, 5 bags/box, 4 boxes/case
	CL-FET075P	75 cm ² cell culture flask with plug seal cap, TC Enhanced	SAL=10 ⁶	5 pcs/bag, 5 bags/box, 4 boxes/case
	CL-FET075V	75 cm ² cell culture flask with vent cap, TC Enhanced	SAL=10 ⁶	5 pcs/bag, 5 bags/box, 4 boxes/case
	CL-FET175V	175 cm ² cell culture flask with vent cap, TC Enhanced	SAL=10 ⁶	1 pcs/bag, 20 bags/case


	Part No.	Description	Sterility level	Pack
 <p>Cell culture plate</p>	CL-PET006	6 well cell culture plate, flat bottom, TC Enhanced Treated	SAL=10 ⁶	Individual pack, 100 pcs/case
	CL-PET012	12 well cell culture plate, flat bottom, TC Enhanced Treated	SAL=10 ⁶	Individual pack, 100 pcs/case
	CL-PET024	24 well cell culture plate, flat bottom, TC Enhanced Treated	SAL=10 ⁶	Individual pack, 100 pcs/case
	CL-PET048	48 well cell culture plate, flat bottom, TC Enhanced Treated9	SAL=10 ⁶	Individual pack, 100 pcs/case
	CL-PET096	96 well cell culture plate, flat bottom, TC Enhanced Treated	SAL=10 ⁶	Individual pack, 100 pcs/case
	CL-PET096U	96 well cell culture plate, U bottom, TC Enhanced Treated	SAL=10 ⁶	Individual pack, 100 pcs/case

	Part No.	Description	Sterility level	Pack
 <p>Cell culture dish</p>	CL-DET035	35mm cell culture dish, TC Enhanced	SAL=10 ⁶	10 pcs/bag, 50 bags/case
	CL-DET060	60mm cell culture dish, TC Enhanced	SAL=10 ⁶	10 pcs/bag, 50 bags/case
	CL-DET100	100mm cell culture dish, TC Enhanced	SAL=10 ⁶	10 pcs/bag, 20 bags/case
	CL-DET150	150mm cell culture dish, TC Enhanced	SAL=10 ⁶	5 pcs/bag, 12 bags/case

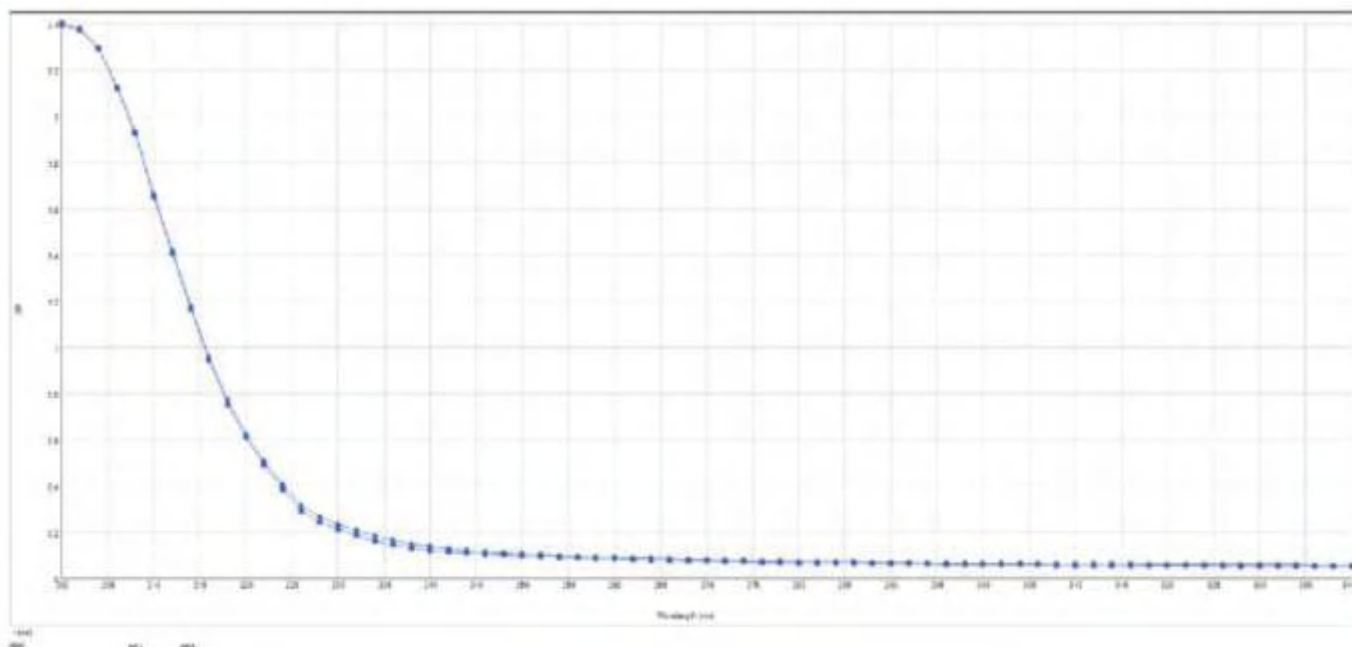
Poly-D-lysine coated surface treatment (Made to order)


	Part No.	Description	Sterility level	Pack
 <p>Cell culture flask</p>	CL-FP025P	25 cm ² cell culture flask with plug seal cap, Poly-D-lysine coated	SAL=10 ⁶	10 pcs/bag, 50 pcs/case
	CL-FP025V	25 cm ² cell culture flask with vent cap, Poly-D-lysine coated	SAL=10 ⁶	10 pcs/bag, 50 pcs/case
	CL-FP075P	75 cm ² cell culture flask with plug seal cap, Poly-D-lysine coated	SAL=10 ⁶	5 pcs/bag, 25 pcs/case
	CL-FP075V	75 cm ² cell culture flask with vent cap, Poly-D-lysine coated	SAL=10 ⁶	5 pcs/bag, 25 pcs/case
	CL-FP175P	175 cm ² cell culture flask with plug seal cap, Poly-D-lysine coated	SAL=10 ⁶	1 pcs/bag, 20 pcs/case
	CL-FP175V	175 cm ² cell culture flask with vent cap, Poly-D-lysine coated	SAL=10 ⁶	1 pcs/bag, 20 pcs/case

	Part No.	Description	Sterility level	Pack
 <p>Cell culture plate</p>	CL-PP006	6 well cell culture plate, flat bottom, Poly-D-lysine coated	SAL=10 ⁶	Individual pack, 40 pcs/case
	CL-PP012	12 well cell culture plate, flat bottom, Poly-D-lysine coated	SAL=10 ⁶	Individual pack, 40 pcs/case
	CL-PP024	24 well cell culture plate, flat bottom, Poly-D-lysine coated	SAL=10 ⁶	Individual pack, 40 pcs/case
	CL-PP048	48 well cell culture plate, flat bottom, Poly-D-lysine coated	SAL=10 ⁶	Individual pack, 40 pcs/case
	CL-PP096	96 well cell culture plate, flat bottom, Poly-D-lysine coated	SAL=10 ⁶	Individual pack, 48 pcs/case
	CL-PP096U	96 well cell culture plate, U bottom, Poly-D-lysine coated	SAL=10 ⁶	Individual pack, 48 pcs/case

	Part No.	Description	Sterility level	Pack
 Cell culture dish	CL-DP035	35mm cell culture dish, Poly-D-lysine coated	SAL=10 ⁶	10 pcs/bag, 40 pcs/case
	CL-DP060	60mm cell culture dish, Poly-D-lysine coated	SAL=10 ⁶	10 pcs/bag, 40 pcs/case
	CL-DP100	100mm cell culture dish, Poly-D-lysine coated	SAL=10 ⁶	10 pcs/bag, 40 pcs/case
	CL-DP150	150mm cell culture dish, Poly-D-lysine coated	SAL=10 ⁶	5 pcs/bag, 60 pcs/case

UV-Transparent Microplates



	Part No.	Description	Sterility level	Pack
 Microplate	UV96C-P	96-well Clear Flat Bottom UV-Transparent Microplate (Without lid)	SAL=10 ⁶	Individual pack, 50 pcs/case
	UV384C-P	384-well Clear Flat Bottom UV-Transparent Microplate (Without lid)	SAL=10 ⁶	Individual pack, 50 pcs/case
	UV96B-P	96-well Black with Clear Flat Bottom UV-Transparent Microplate (Without lid)	SAL=10 ⁶	Individual pack, 50 pcs/case
	UV384B-P	384-well Black with Clear Flat Bottom UV-Transparent Microplate (Without lid)	SAL=10 ⁶	Individual pack, 50 pcs/case
	UV96C	96-well Clear Flat Bottom UV-Transparent Microplate (With lid)	SAL=10 ⁶	Individual pack, 50 pcs/case
	UV384C	384-well Clear Flat Bottom UV-Transparent Microplate (With lid)	SAL=10 ⁶	Individual pack, 50 pcs/case
	UV96B	96-well Black with Clear Flat Bottom UV-Transparent Microplate (With lid)	SAL=10 ⁶	Individual pack, 50 pcs/case
	UV384B	384-well Black with Clear Flat Bottom UV-Transparent Microplate (With lid)	SAL=10 ⁶	Individual pack, 50 pcs/case

PakGent®

Save every drop of precious reagent for you.

PakGent Bioscience (Suzhou) Co., Ltd.
 Tel: +86 (0) 512 6670 0017
 Address: Floor 1-3, Building 33, Alloy Industrial Park, Wuzhong District, Suzhou, China.

PakGent Bioscience (Changshu) Co., Ltd.
 Tel: +86 (0) 512 5298 8330
 Address: No.9 Lecheng Road, Bixi Street, Changshu, Jiangsu Province, China.

PakGent Bioscience (Shanghai) Co., Ltd.
 Tel: 400-167-1717
 Address: Building C, No 888, Lake west road, Lin gang section, Free Trade Zone, Shanghai, China.